

SPECIFICATIONS

Range	C65	0 to 1999 μ S/cm
	C66	0.00 to 10.00 mS/cm
Resolution	C65	1 μ S/cm
	C66	0.01 mS/cm
Accuracy (@20°C)		\pm 2% F.S.
Typical EMC		\pm 2% F.S.
Deviation		
Temperature Compensation		Automatic, 0 to 50°C with β =2%/°C
Calibration		Manual, at 1 point through trimmer
Probe	C65	MA73075 (replaceable)
	C66	MA73076 (replaceable)
Environment		0 to 50°C; 100% RH
Battery type		3 x 1.5V, alkaline
Battery life		approx. 250 hours of continuous use
Dimensions		165 x 30 x 30 mm
Weight		80 g

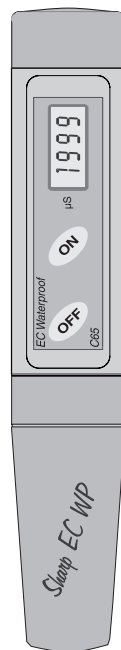
ACCESSORIES

MA73075	Replaceable Conductivity probe, LR
MA73076	Replaceable Conductivity probe, HR
M10031B	1413 μ S/cm calibration solution, 20 mL (25 pcs)



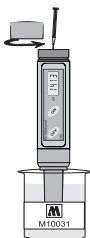
USER MANUAL

C65 and C66 Waterproof EC meters



CALIBRATION:

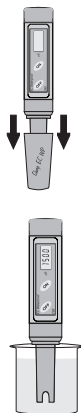
- Immerse the meter in 1413 $\mu\text{S}/\text{cm}$ (**M10031**) calibration solution.
- Unscrew the battery compartment cap on the top of the meter.
- Allow the reading to stabilize and with a small screwdriver turn the calibration trimmer inside the battery compartment until the display shows "1413" for **C65** or "1.41" for **C66**.
- Replace the battery compartment cap.



The calibration is now complete.

OPERATION:

- Remove the protective cap.
- Turn the meter on by pressing the ON key.
- Immerse the probe in the solution to be tested.
- Stir gently and wait for the reading to stabilize.
- After use, rinse the electrode with water to minimize contamination.
- Always replace the protective cap after use.



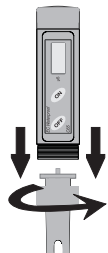
Note: if the reading is over-range, the display will show "1".



PROBE REPLACEMENT:

The probe can be easily replaced in the following way:

- Remove the protective cap.
- Unscrew the plastic ring on the top of the probe.
- Pull out the **MA73075** (or **MA73076**) probe and replace it with a new one (aligning the colored pin towards the LCD side).
- Make sure the gaskets are in place before screwing back the plastic ring.



BATTERY REPLACEMENT:

The meter is supplied with BEPS (Battery Error Preventing System) which avoids any erroneous reading due to low battery level, by switching the meter off. To replace the batteries unscrew the battery compartment cap and replace all three 1.5V batteries while paying attention to their polarity. Make sure the gasket is in place before screwing back the cap.

Batteries should only be replaced in a non-hazardous area using the battery type specified in this instruction manual.

WARRANTY:

These instruments are warranted from all defects in materials and manufacturing for a period of **two years** from the date of purchase. The **probes are warranted for a period of one year**.

If during this period, the repair or replacement of parts is required, where the damage is not due to negligence or erroneous operation by the user, please return the parts to either dealer or our office and the repair will be effected free of charge.